

---

# HESS 5kW

Cell 3.2V 100Ah  
Module 51.2V 100Ah  
(16S)

가정용 ESS

# Module Specification [5kW]

## Battery Specification

Items	Specification
Nominal Capacity	100Ah @0.2C, 25°C
Nominal Voltage	51.2 VDC
Rated Charge Voltage	56.8 V
Max. Continuous Charge Current	100A@25° C
Discharge Cut-Off Voltage	43.2 V
Max. Continuous Discharge Current	100A@25° C
Temperature Range of Charge	0° C - 55° C
Temperature Range of Discharge	-20° C - 60° C
Allowed Humidity Range	5% - 95% RH
Weight	Approx. 42Kg
Dimension(W*H*D)	650*168*560mm (Outer Case)



## Inverter Specification

- 높은 효율**      최대 효율성 97.6% 유럽 효율성 97.3%

최대 충전 배출 전류 100a

합리적인 에너지 제어
- 높은 신뢰성**    배터리 수명을 연장하기 위한 bms 시스템 사용

자연 냉각 설계
- 지능형 유지보수** 연산 배터리 및 리튬 배터리의 에너지 저장 시스템과 호환 가능

원격 구성 및 업그레이드

# Module Specification [5kW]

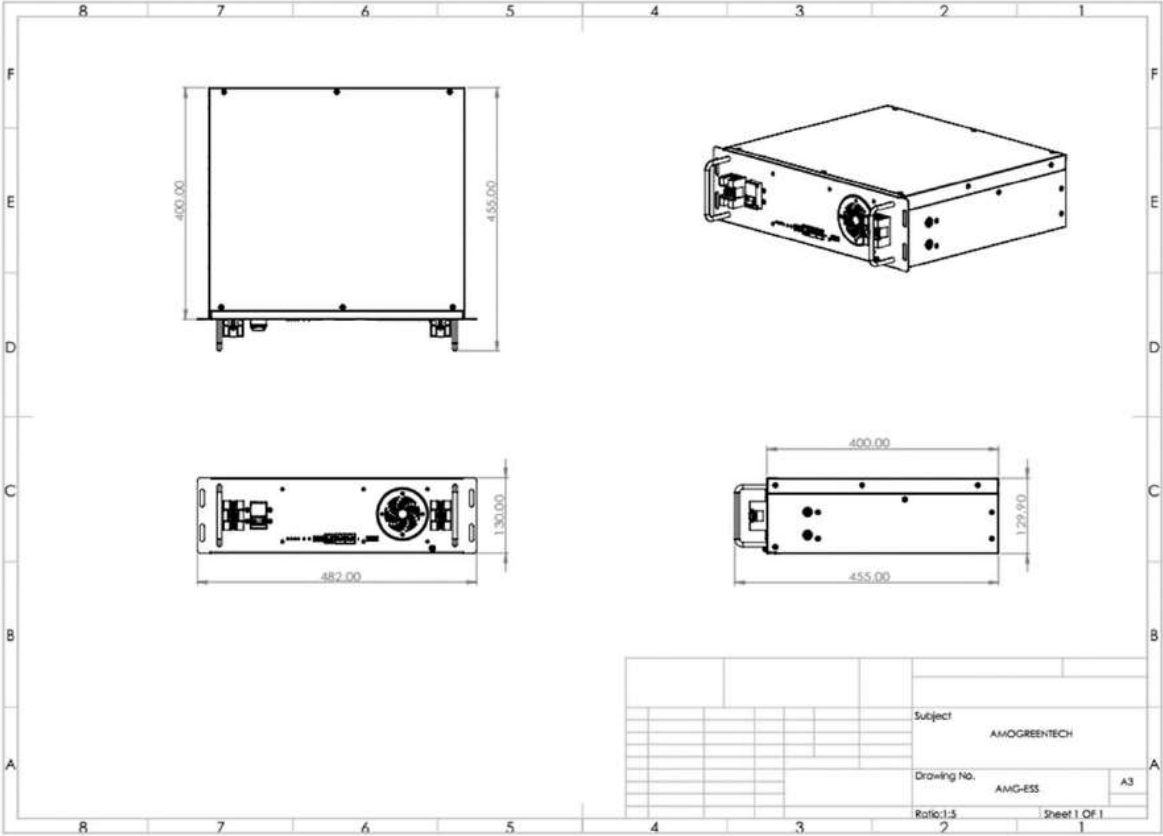
## Inverter Specification

<b>Model</b>	<b>HESS-3000-5KS-IN60</b>	
<b>Efficiency</b>		
Max. Efficiency(PV to Grid)	97.6%	
European Efficiency	97.3%	
Max. Efficiency(Battery to Load)	97.6%	
<b>Input (PV)</b>		
Max. Input Voltage	580V	
Rated Input Voltage	360V	
Max. Input Current	11A	
Max. Short Circuit Current	12A	
Start Input Voltage	125V	
MPPT Operating Voltage Range	125V-550V	
Max. Number of PV Strings	2	
No. of MPPTs	2	
<b>Input(Battery)</b>		
Battery Type	Lithium-ion/Lead-Acid	
Nominal Battery Voltage	48V	
Battery Voltage Range	40-58V	
Max. Charge/Discharge Current	70A	100A
Lithium-ion Battery Charge Curve	Self-adaption to BMS	
Lead-Acid Battery Charge Curve	3 stages	
<b>Output(Grid)</b>		
Rated AC Active Power	5000W	
Max. AC Active power	5500W	
Rated AC Voltage	220V/230V	
AC Voltage Range <sup>①</sup>	179.7V-262.8V(AU Grid Code)	
Rated Grid Frequency	50Hz/60Hz	
Grid Frequency Range <sup>②</sup>	50Hz/60Hz ± 5%	
Max. AC Current Output to Utility Grid (A)	22.8A	
THDI	<3% ( Rated Power )	
Power Factor	Adjustable 0.8 Leading - 0.8Lagging	

<b>Output(EPS)</b>	
Nominal Output Power	4600VA
Nominal Output Voltage	220V
Nominal Output Frequency	50Hz/60Hz
THDV	<3% @100% R Load
Switching Time(Typical)	<20ms
<b>Protection</b>	
DC switch	Support
Anti-islanding protection	Support
AC overcurrent protection	Support
AC short circuit protection	Support
DC reverse connection	Support
Surge Arrester	AC Type III, DC Type III ( optional )
Insulation detection	Support
Leakage current protection	Support
Anti-islanding protection	Support
<b>General</b>	
Topology	High Frequency Isolation
IP Rating	IP65
Cooling	Natural cooling
Operating Temperature Range	-25°C-60°C
Relative Humidity Range	0-100%
Max. Operating Altitude	2000m
Noise(Typical)	<30dB
Dimensions (W*H*D)	650*168*560mm ( Outer Case )
Weight	25Kg
<b>HMI &amp; COM</b>	
Display	LED&APP
Communication	RS485,CAN, WIFI/GPRS/4G(optional)
<b>Certification</b>	
Safety	IEC62109-1&2, IEC62040-1
Grid Code	AS/NZS 4777.2:2015, IEC 61727/62116, VDE4105-AR-N, EN 50549
<b>Warranty</b>	5 Years/10 Years(Optional)

# System Specification [5kW]

Drawing - Module



Rendering

