
LFPS-4810000S

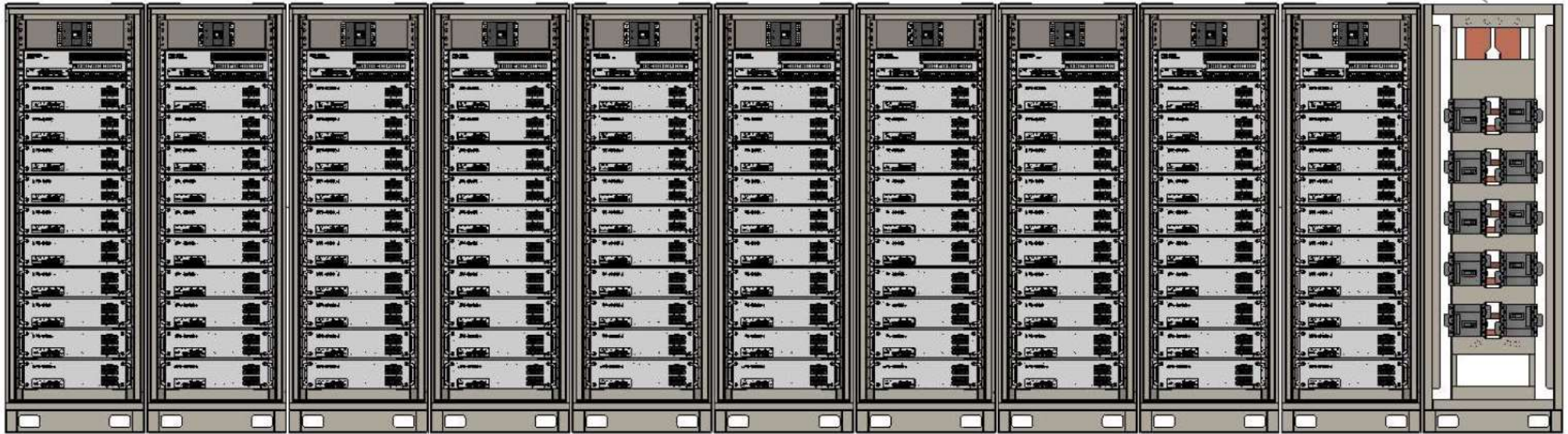
Cell 3.2V 50Ah
Module(Shelf) 48V 100Ah
(15S2P)

중대형 규모의 기지국
통신국사
각종 유틸리티의 비상 전원 장치

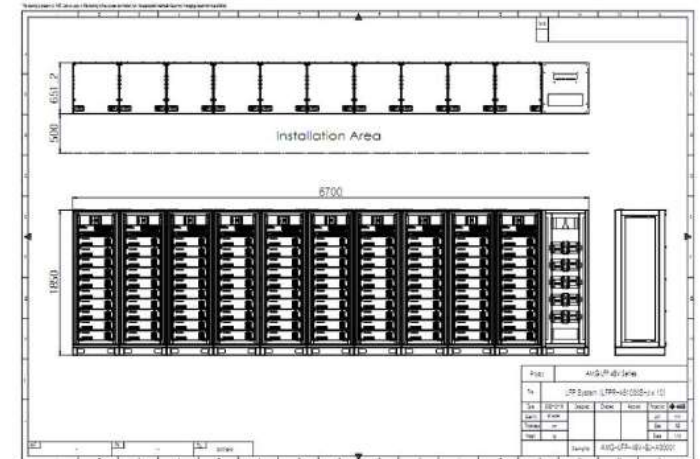
System Specification [LFPS-4810000S]

System Configuration (최대 10Rack/100모듈)

통합 분전반(PDS)




- LFPS-4810000S 의 최대 10System 병렬 구성
- 통합 PDS (Power Distribution System)
- Rack 별 PDS(Power Distribution Self) 의 통합 제어
- 최대 48V 10,000Ah 구성



System Specification [LFPS-4810000S]

통합분전반 (PDS)

Item	Specification	Reference
Model	HVDC-PDPR-500S	
Main Voltage (V)	500V Max.	
Main Current (A)	500A Max.	
Distribution Voltage (V)	500V Max.	
Distribution Current (A)	250A Max.	
Distribution Channel	10 Ch.	
Remote Monitoring Interface	CAN, ETHERNET	
Alarm Output Max. Voltage (V)	60	
Alarm Output Max. Current (A)	1	
Alarm Output Max. Drop Voltage (V)	2	
Alarm Output Channel	2	
Operating Temperature(°C)	-20 ~ 60	
Dimensions (WxDxH) (mm)	760 x 690 x 1950	
Weight (kg)	≤ 200	