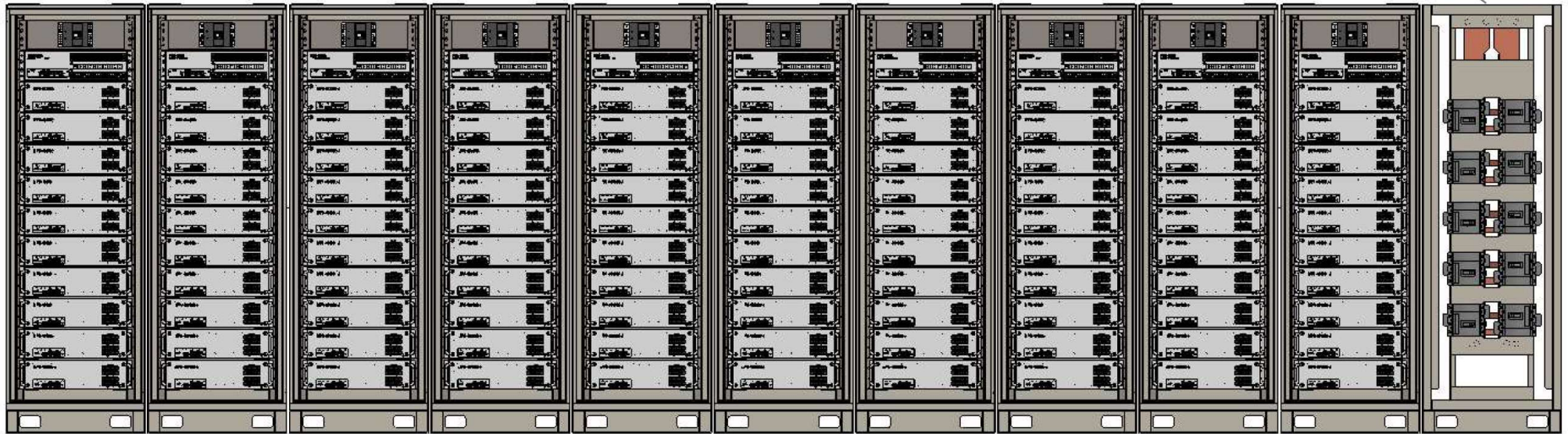

LFPS-4810000S

Cell 3.2V 50Ah
Module(Shelf) 48V 100Ah
(15S2P)

medium and large-sized base stations
communication offices
Emergency power supply for various utility

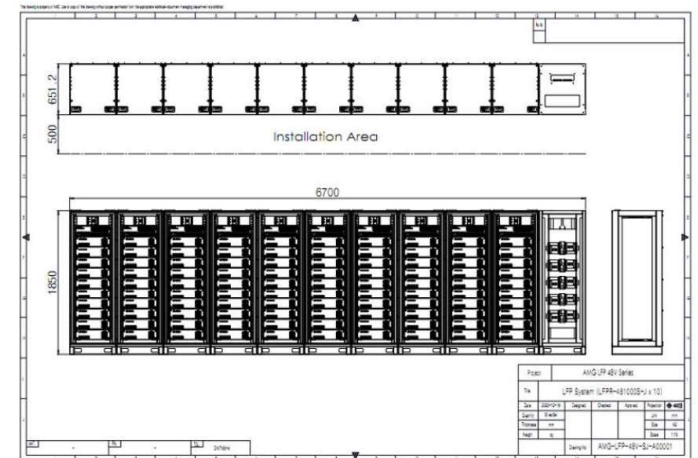
System Specification [LFPS-4810000S]

System Configuration (Max 10Rack/100Module)




Power distribution System

- Up to 10 LFPS-481000S systems can be configured in parallel
- integrated PDS (Power Distribution System)
 - Integrated control of Power Distribution Self (PDS) by Rack
- Configuring up to 48V 10,000Ah



System Specification [LFPS-4810000S]

PDS Specification

Item	Specification	Reference
Model	HVDC-PDPR-500S	
Main Voltage (V)	500V Max.	
Main Current (A)	500A Max.	
Distribution Voltage (V)	500V Max.	
Distribution Current (A)	250A Max.	
Distribution Channel	10 Ch.	
Remote Monitoring Interface	CAN, ETHERNET	
Alarm Output Max. Voltage (V)	60	
Alarm Output Max. Current (A)	1	
Alarm Output Max. Drop Voltage (V)	2	
Alarm Output Channel	2	
Operating Temperature(°C)	-20 ~ 60	
Dimensions (WxDxH) (mm)	760 x 690 x 1950	
Weight (kg)	≤ 200	